

The logo for AirInsight Group, featuring the word "AirInsight" in blue and red, and "Group" in blue, all in a sans-serif font.

AirInsight Group

The WINGX logo, consisting of a solid orange horizontal bar above the word "WINGX" in a bold, grey, sans-serif font.

WINGX

MAKING AEROSPACE INFORMATION INTELLIGENT

GLOBAL BUSINESS AVIATION ACTIVITY TRENDS

Actionable Business Intelligence

July 25th 2020

Has Business Aviation been relatively resilient?

WINGX

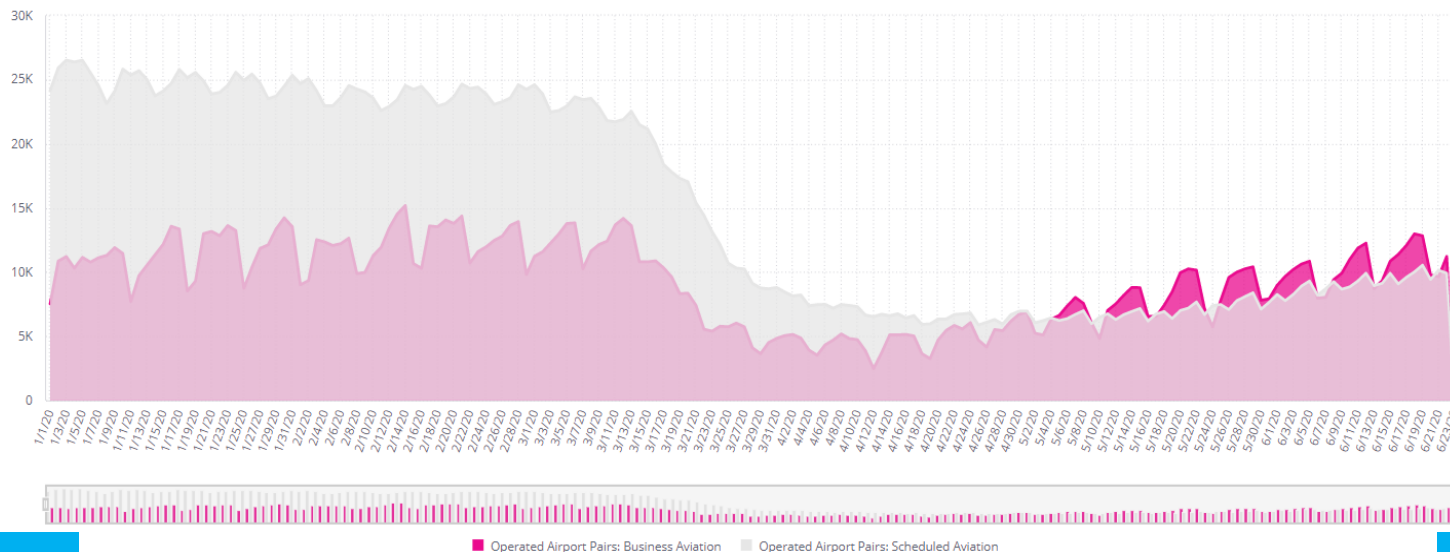
- Bizav traditionally offered 3-4 X unique pairs vs Scheduled aviation, growing to X 6 March-June, offering >daily connections since April. Global schedules -63% in June.

Operated Airport Pairs: Business Aviation

352,990

Operated Airport Pairs: Scheduled Aviation

58,377



Jan 2020

June 2020

Source: WINGX, ATC, ADSB

Business aviation activity by region, country, airport, route

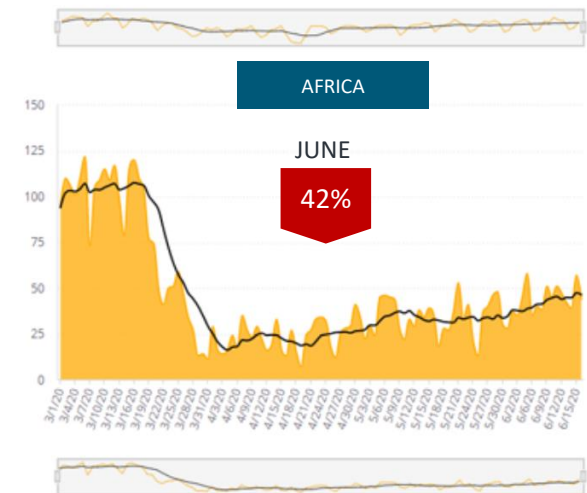
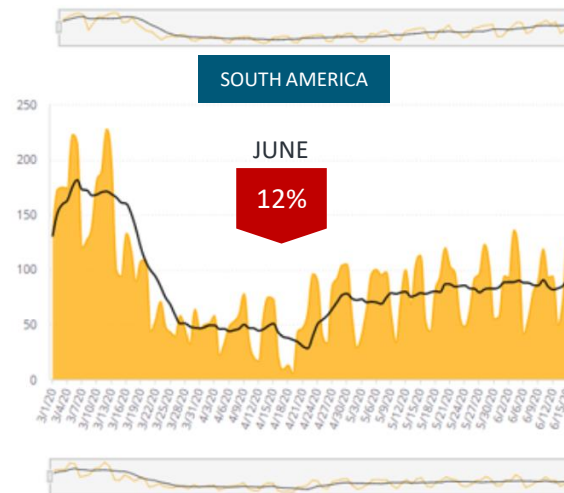
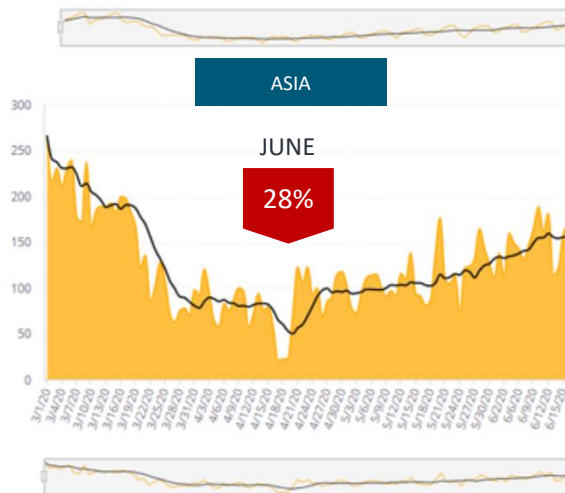
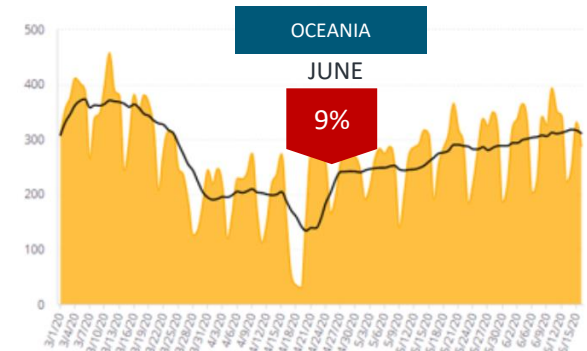
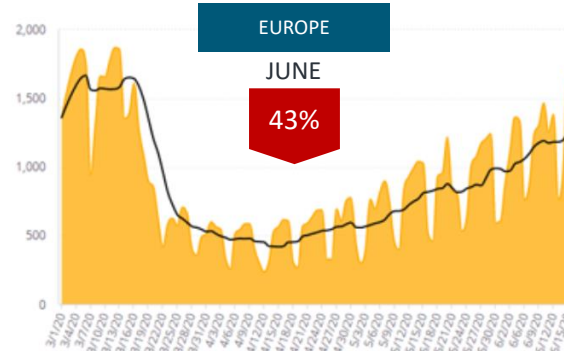
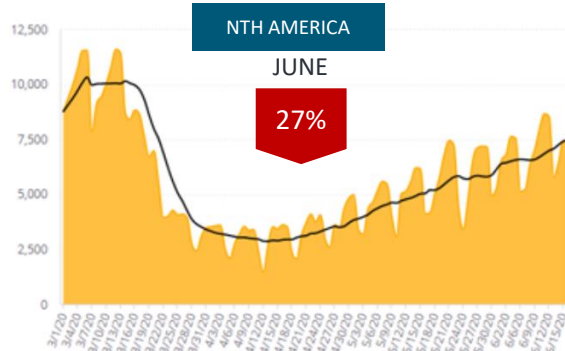
WINGX

- Activity trailing by 30% YOY in June (6.23), with Europe furthest behind but now recovering quick. Recovery in other regions has cooled slightly.

X% = decline in flight activity

Global Regions / Business Aviation

Departures Last 7 Days (Moving Avg.)



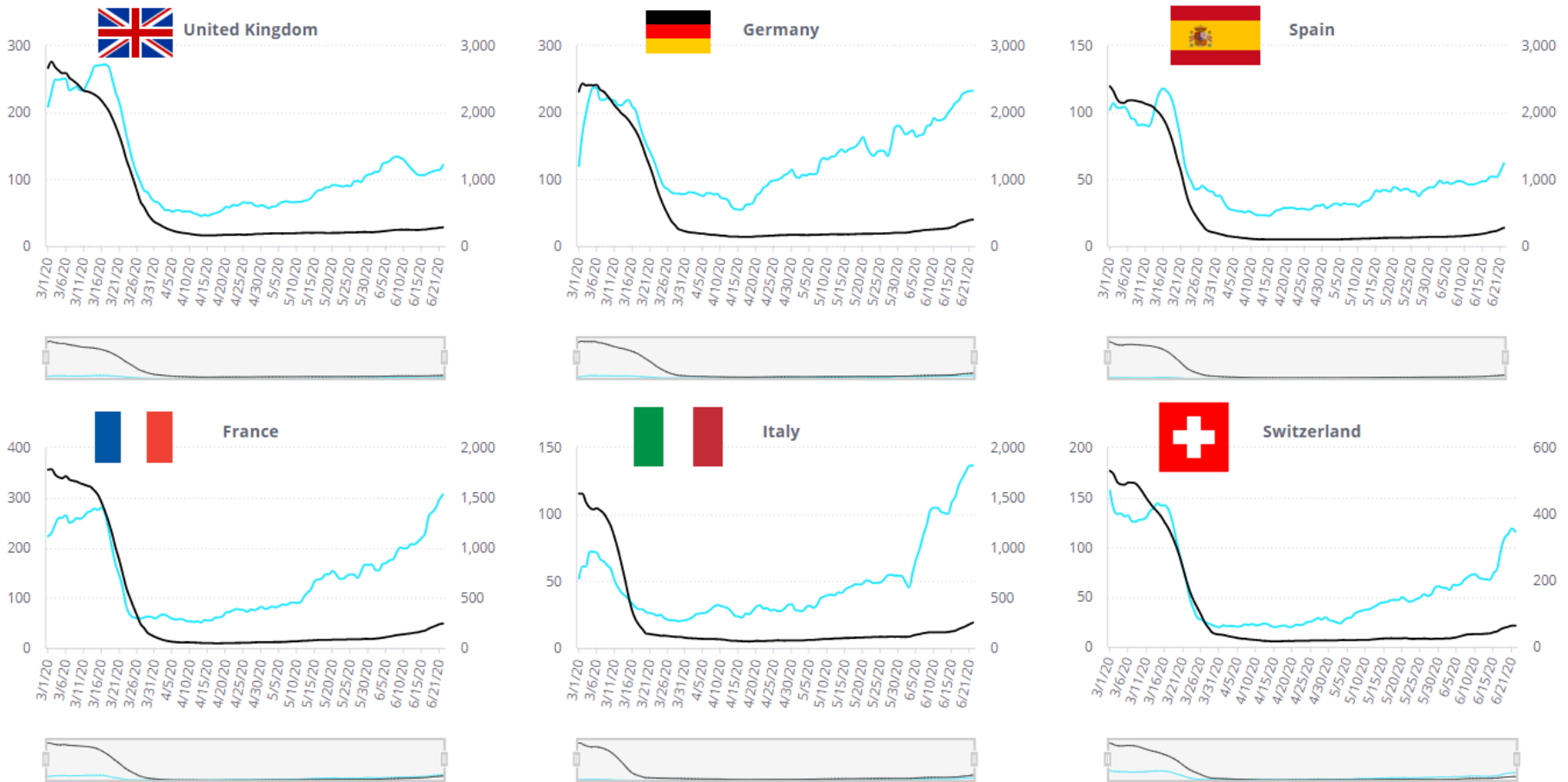
March 1st, 2020

June 17, 2020

Business aviation activity by region, country, airport, route

WINGX

- Germany solid recovery, with France and Italy coming back in June. UK and Spain floundering. Switzerland domestic activity is up June YOY.



Left axis: Business Aviation Departures: Last 7 Days (Moving Avg.) Right axis: Scheduled Aviation Departures: Last 7 Days (Moving Avg.)

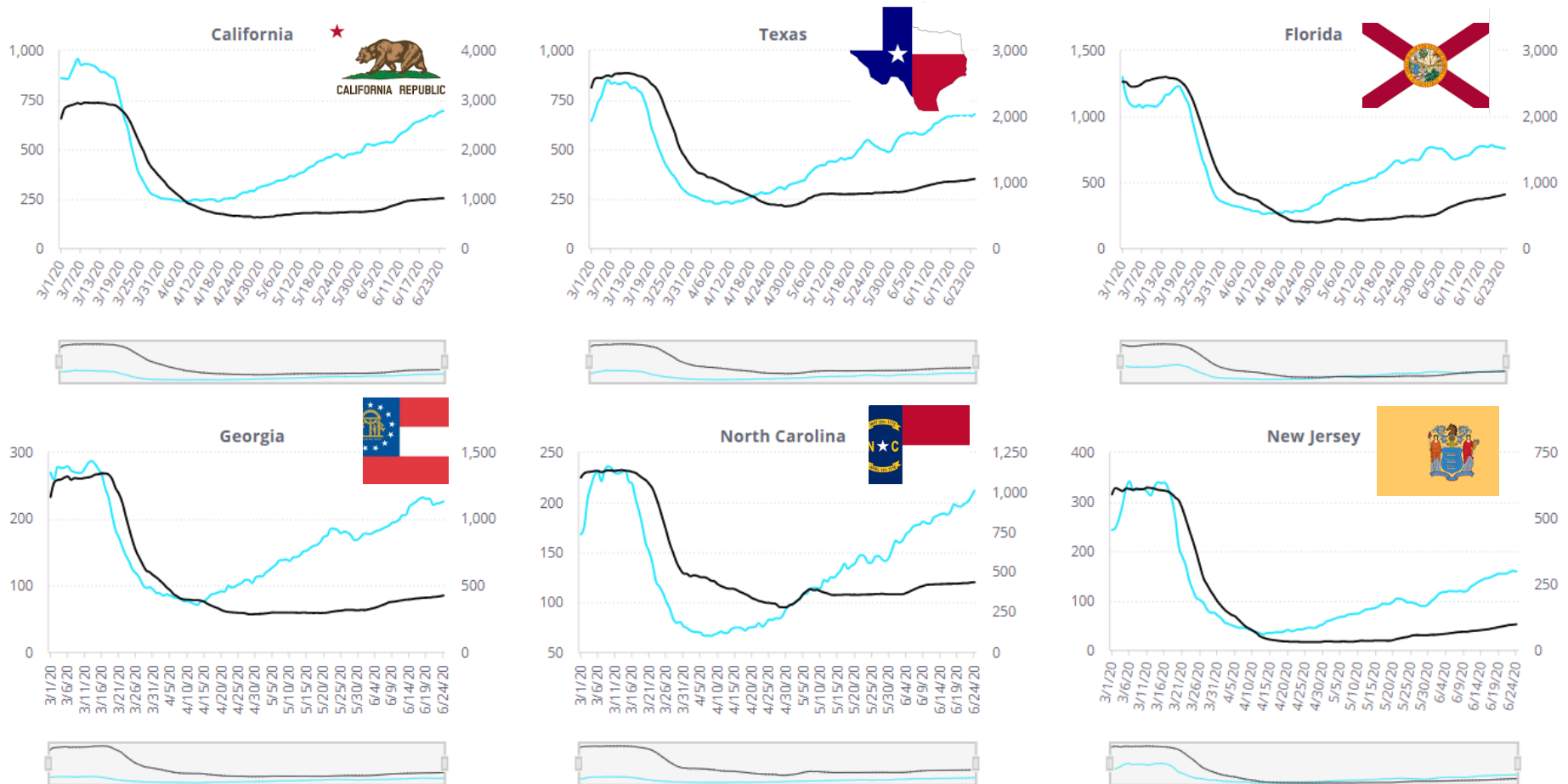
March 1st, 2020

June 21, 2020

Business aviation activity by region, country, airport, route

WINGX

- Correlation with severity of suppression; south-east and central states relatively stronger recovery. California and New Jersey activity is way back.



Left axis: Business Aviation Departures: Last 7 Days (Moving Avg.) Right axis: Scheduled Aviation Departures: Last 7 Days (Moving Avg.)

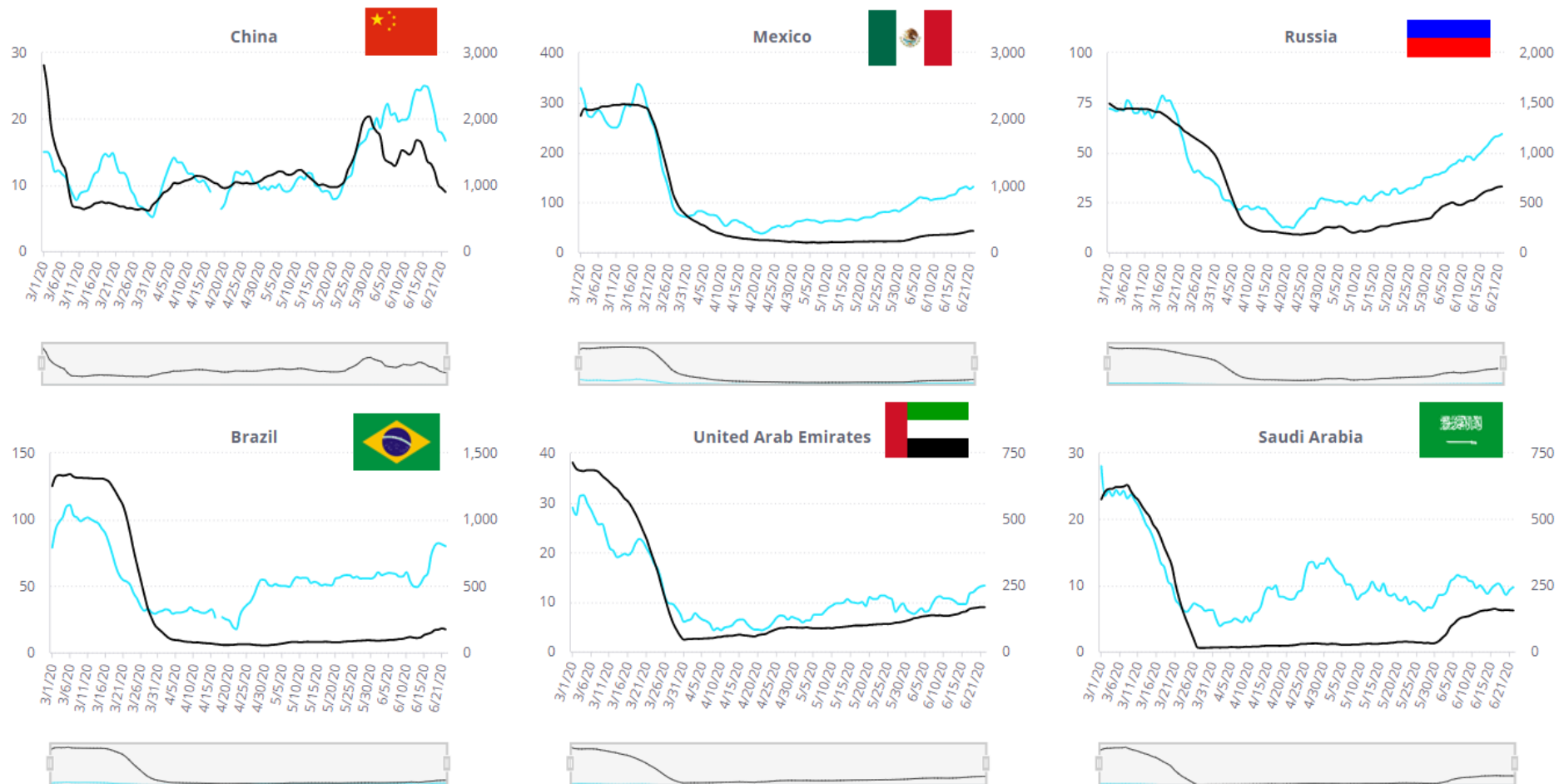
March 1st, 2020

June 21, 2020

Business aviation activity by region, country, airport, route

WINGX

- Recovery in China, now off again. No recoveries in Mexico, UAE, Saudi. Brazil and Russia activity quite resilient.



Left axis: Business Aviation Departures: Last 7 Days (Moving Avg.) Right axis: Scheduled Aviation Departures: Last 7 Days (Moving Avg.)

March 1st, 2020

MBH

Source: WINGX, ATC, ADSB

June 21, 2020

Business aviation activity by region, country, airport, route

WINGX

- Bizav activity down 26% in June, with other resilient markets Norway, NZ, Russia, Turkey, Australia (FH+). Laggards: UK, Mexico, Spain.

Country Trends



Departure Country	Flights	Flight Hours	MTD:Flights	MTD:Hours
United States	148,215	213,198	-25.9%	-23.3%
Canada	14,348	17,422	-37.0%	-42.8%
Australia	5,764	6,282	-4.2%	15.8%
France	5,496	6,796	-45.4%	-52.6%
Germany	4,730	5,859	-20.9%	-24.7%
United Kingdom	2,776	4,513	-61.3%	-62.0%
Mexico	2,729	3,875	-61.2%	-61.4%
Italy	2,542	3,253	-53.0%	-58.6%
Switzerland	2,007	2,574	-32.9%	-37.2%
Brazil	1,511	2,128	-7.2%	-27.2%
Spain	1,293	1,925	-69.0%	-74.4%
Norway	1,264	1,143	-20.2%	-31.1%
New Zealand	1,199	825	-22.7%	-18.0%
Russia	1,183	2,907	-37.2%	-36.2%
Turkey	1,077	1,471	-25.2%	-38.4%
Grand Total	212,397	302,690	-30.9%	-31.4%

June 1st, 2020

June 23rd, 2020

Business aviation activity by region, country, airport, routeient?

WINGX

- Flight activity oriented around domestic travel. Germany back to YOY levels, Australia close (Switzerland +40%)

MTD Trends by Country Flow

Country Flow	Departures	MTD: Departures
United States-->United States	144,736	-24.1%
Canada-->Canada	13,424	-28.6%
Australia-->Australia	5,735	-3.6%
France-->France	3,425	-22.7%
Germany-->Germany	2,616	-0.7%
Mexico-->Mexico	1,725	-67.1%
Brazil-->Brazil	1,462	-1.1%
Italy-->Italy	1,278	-40.0%
United Kingdom-->United Kingdom	1,231	-57.6%
New Zealand-->New Zealand	1,188	-22.7%
United States-->Mexico	1,167	-30.7%
Norway-->Norway	1,138	-9.2%
Mexico-->United States	967	-39.9%
United States-->Canada	847	-76.3%
Spain-->Spain	797	-48.0%
Grand Total	212,397	-30.9%

June 1st, 2020

June 23rd, 2020

Business aviation activity by region, country, airport, route

WINGX

- In June so far, flight activity is up from Florida, also Arizona, only 7% down in Colorado, still down 32% in California, 57% down in New Jersey.

Departure State	Departures	Flight Hours	Growth:Flights	Growth: Hours
Florida	16,887	29,429	2.0%	21.8%
Texas	14,501	20,435	-23.1%	-25.2%
California	14,079	21,136	-31.5%	-30.7%
Colorado	5,917	9,464	-7.3%	-4.0%
Georgia	4,862	6,388	-16.6%	-17.9%
New York	4,703	7,159	-31.8%	-26.4%
North Carolina	4,355	5,629	-20.8%	-17.5%
Arizona	4,120	6,319	3.6%	4.8%
Pennsylvania	3,651	4,177	-32.4%	-32.7%
Illinois	3,397	5,026	-41.6%	-38.1%
Tennessee	3,307	4,465	-27.7%	-27.0%
Michigan	3,255	4,164	-36.1%	-32.0%
Ohio	3,233	4,373	-32.1%	-29.5%
New Jersey	3,225	5,481	-56.9%	-60.5%

June 1st, 2020

June 23rd, 2020

Business aviation activity by region, country, airport, route

WINGX

- Florida airports showing strong growth. Also Scottsdale, Salt Lake. Big declines at KIAD, KTEB and KLAS

MTD Trends by Departure Airport



Departure Airport	Flights	PTD: Flights
KPBI,PBI,Palm Beach Intl. ,West Palm Beach	2,060	45.8%
KDAL,DAL,Dallas Love Field,Dallas	1,806	-21.0%
KTEB,TEB,Teterboro ,Teterboro	1,661	-68.0%
KAPA,APA,Centennial ,Denver	1,573	-12.3%
KHPN,HPN,Westchester County ,White Plains	1,544	-37.2%
KVNY,VNY,Van Nuys ,Van Nuys	1,408	-26.4%
KHOU,HOU,William P Hobby ,Houston	1,326	-23.5%
KSDL,SCF,Scottsdale ,Scottsdale	1,311	24.6%
KPDK,PDK,DeKalb Peachtree ,Atlanta	1,309	-16.0%
KSNA,SNA,John Wayne -Orange County ,Santa Ana	1,280	-16.3%
KOPF,OPF,Miami-Opa Locka Executive ,Miami	1,160	9.1%
KAPF,APF,Naples Municipal ,Naples	1,109	79.7%
KLAS,LAS,McCarran Intl. ,Las Vegas	1,107	-47.2%
KSLC,SLC,Salt Lake City Intl. ,Salt Lake City	1,062	1.0%
KIAD,IAD,Washington Dulles Intl. ,Washington	1,022	-51.7%

June 1st, 2020

June 23rd, 2020

Business aviation activity by region, country, airport, route

WINGX

- Some isolated growth. Zurich and Geneva quite resilient. Big drops for Farnborough, Luton, less for Biggin Hill.

MTD Trends by Departure Airport



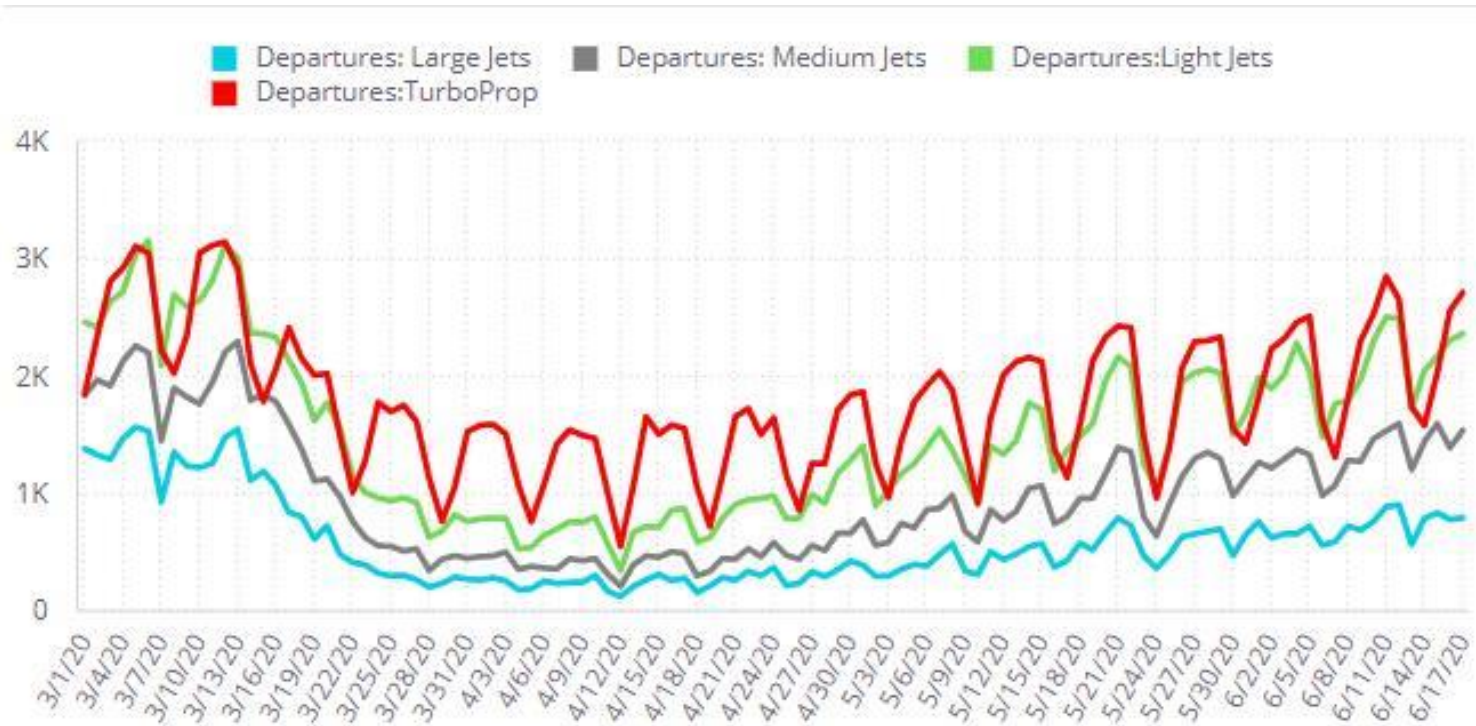
Departure Airport	Flights	PTD: Flights
LFPB,LBG,Paris-Le Bourget ,Paris	889	-57.8%
LSGG,GVA,Geneva Cointrin Intl. ,Geneva	696	-38.1%
LSZH,ZRH,Zurich ,Zurich	598	-29.9%
LFMN,NCE,Nice-Côte d'Azur ,Nice	582	-59.3%
UUWW,VKO,Vnukovo Intl. ,Moscow	482	-40.3%
EGLF,FAB,Farnborough ,Farnborough	404	-66.7%
LOWW,VIE,Vienna Intl. ,Vienna	393	-21.2%
EGKB,BQH,London Biggin Hill ,London	386	-37.0%
LTBA,ISL,Ataturk Intl. ,Istanbul	370	9.1%
EDDM,MUC,Munich ,Munich	363	-26.4%
LIML,LIN,Milano Linate ,Milan	341	-57.0%
EDDB,SXF,Berlin-Schoenefeld ,Berlin	337	-26.6%
LFMD,CEQ,Cannes-Mandelieu ,Cannes/Mandelieu	326	-46.7%
LYBE,BEG,Belgrade Nikola Tesla ,Belgrade	311	23.4%
EGGW,LTN,London Luton ,London	310	-69.8%

June 1st, 2020

June 23rd, 2020

Trends by aircraft type and platform

- Turboprops and Light Jet activity more resilient. Cross-border complexity?
Availability of aircraft? Price? Airport availability?



March 1st

June 23rd, 2020

Trends by aircraft type and platform

WINGX

➤ Coming into June, ongoing contrast Large/Small cabin

Daily Activity Indicators



Aircraft Segment	Departures	Flight Hours	Growth:Flights	Growth: Hours
Airliner/Bizliner(Jet)	326	640	-77.4%	-85.1%
Entry Level Jet	5,165	6,413	-20.5%	-17.0%
Heavy Jet	18,063	32,828	-43.6%	-44.0%
Light Jet	38,185	53,452	-23.7%	-18.8%
Midsize Jet	13,578	21,244	-35.2%	-31.3%
Super Light Jet	14,740	20,982	-32.4%	-28.3%
Super Midsize Jet	25,316	41,809	-29.5%	-26.9%
Turboprop	79,163	93,461	-27.5%	-24.7%
Ultra Long Range Jet	9,452	20,769	-49.7%	-58.5%
Very Light Jet	8,409	11,091	-21.2%	-17.7%
Grand Total	212,397	302,690	-30.9%	-31.4%

June 1st, 2020

June 23rd, 2020

Trends by aircraft type and platform

WINGX

- This month, overall activity close to normal for CJ3 and Nextant. Challenger 300 and Citation XLS picking up again.

United States

AircraftType ^	Segment	Departures v	PTD: Departures
Pilatus PC-12	Turboprop	13,798	-22.6%
Cessna 208 Caravan	Turboprop	11,273	-31.5%
Bombardier-Challenger 300 / 350	Super Midsize Jet	7,164	-23.4%
King Air 200	Turboprop	6,982	-33.8%
Cessna-Citation Excel / XLS	Super Light Jet	6,916	-30.2%
Embraer-Phenom 300	Light Jet	5,803	-19.8%
King Air 90	Turboprop	5,121	-31.0%
Cessna-560 Encore / 5 / Ultra	Light Jet	4,287	-18.3%
King Air 350	Turboprop	4,160	-39.3%
Hawker-Hawker 700/750/800/850/900	Midsize Jet	3,875	-26.3%
Hawker Beechjet 400/400A /Nextant	Light Jet	3,869	-11.1%
Cessna-Citation CJ3	Light Jet	3,763	-4.5%
Cessna-Citation Latitude	Super Midsize Jet	3,591	-12.6%
Cessna-Citation CJ1 / CitationJet / 525	Entry Level Jet	3,468	-20.7%
Gulfstream G300/350/400/450	Heavy Jet	3,391	-27.1%
Grand Total		147,658	-26.2%



June 1st, 2020

June 23rd, 2020